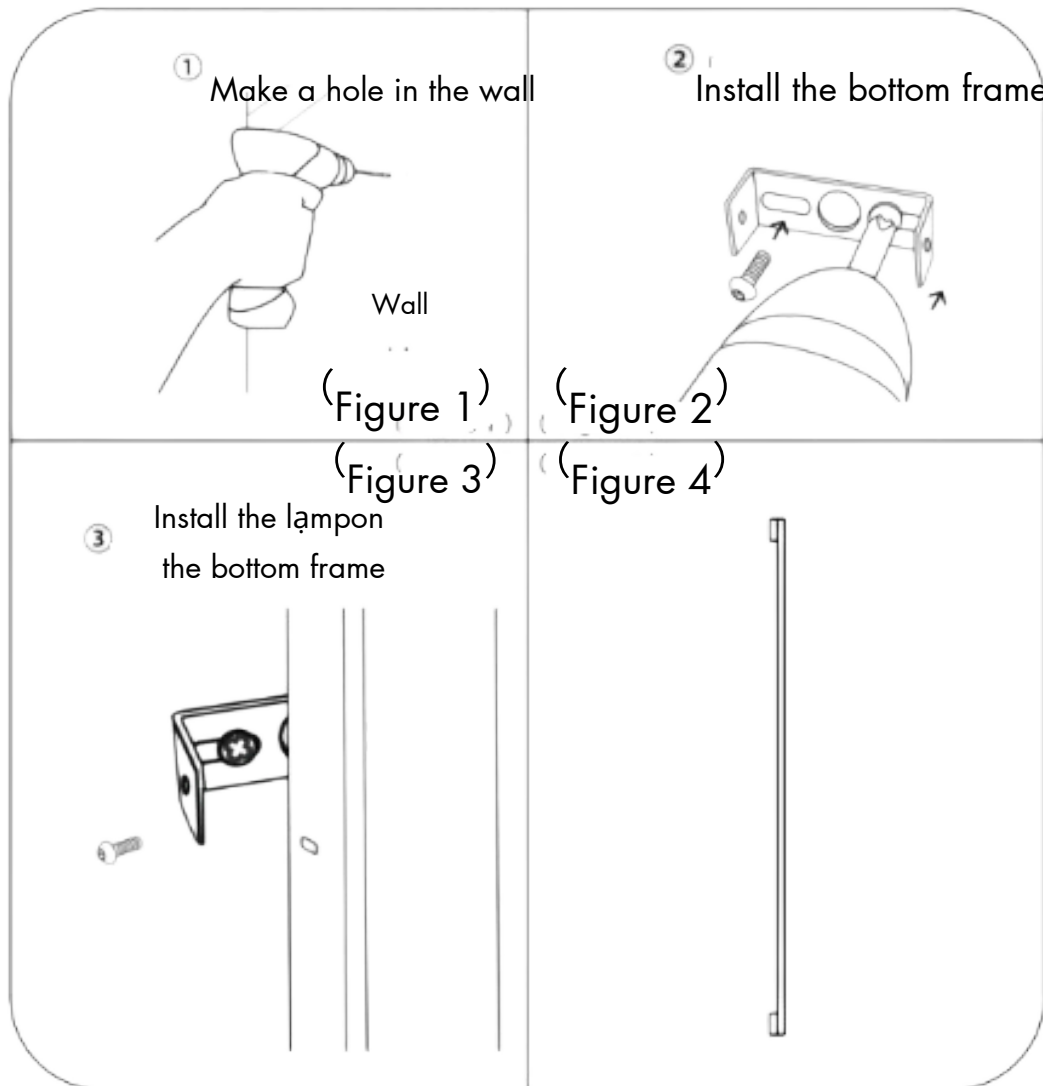




Please read this manual before installation. Please keep it for reference

---



1. Disconnect the power supply before installation and determine the installation position and bearing capacity.
2. Insert the expansion rubber plug into the wall according to the hole distance of the lamp hanging plate, and align the expansion rubber plug with self tapping screws. Fix the hanging plate on the wall. (as shown in Figure 1)
3. Connect the household power line to one end of the lamp power line, the live line to L and the zero line to n. Please note that the wires are in good contact and the copper wire at the tail end is not exposed (as shown in Figure 2)
4. After the lamp wiring is completed, drag the lamp, align the lamp hanging hole with the hanging plate, and lock it with the hanging plate screw. (as shown in Figure 3)
5. Ensure that the installation is correct before normal use (as shown in Figure 4)

Note: the product graphics in this manual are for reference only, and the real object shall prevail.