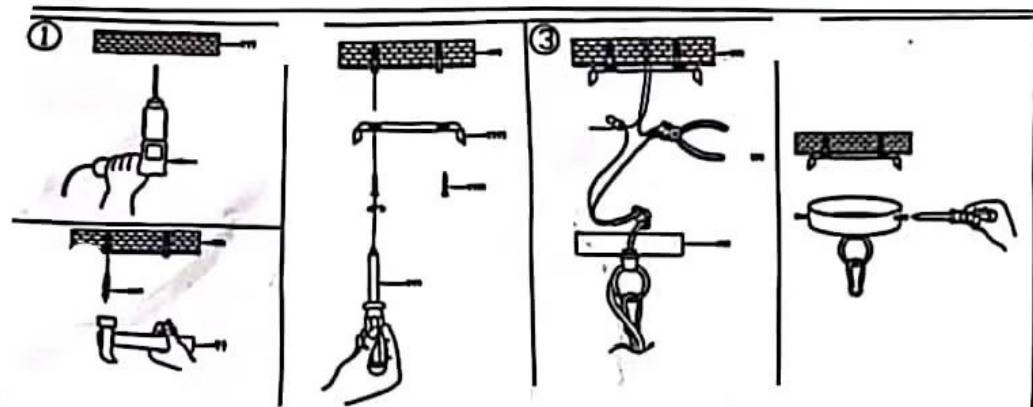
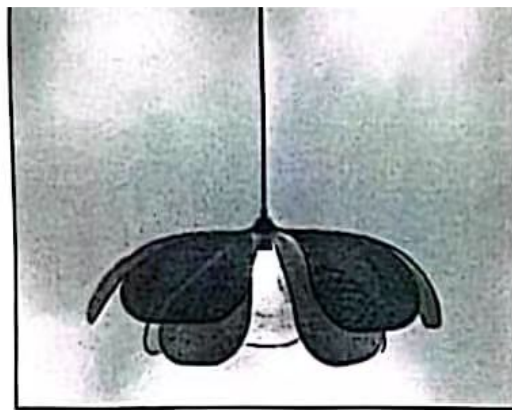


# Instructions

## Reminder

1. Before installation, please check that the parts package is complete and that the luminaire is in good condition and that the luminaire is in perfect condition.
  2. Before installation, disconnect the power supply, then carry out the wiring.
  3. Install the luminaire housing first, then the power supply.
  4. Installation and maintenance must be carried out by professional technicians.
- be carried out



Drill the holes in the mounting position of the light according to the holes in the pegboard. Drive the expansion dowels with a hammer into the holes.

Use self-tapping screws to fix the pegboard in the ceiling and pull the tighten the pegboard with a screwdriver to tighten.

Connect the plus and minus poles of the wires and lamps in the room, connect the wires with the connection caps and clamp the a vice, so that the wires do not fall off.

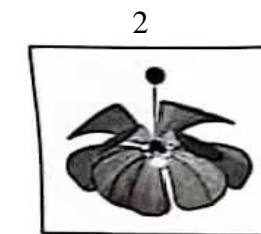
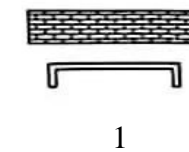
Align the holes in the holes of the ceiling panel with the holes in the of the hanging plate, Attach the the hanging plate to the screws to the ceiling panel and then use a screwdriver to screwdriver to fix it in place. fasten it in place.

Step 1: Attach the pegboard to the wall.

Step 2: Six large discs on the top side, five small discs on the bottom side. Hold in place with your hand positioned appropriately.

Step 3: Mounted with an E27 lamp head.

Step 4: Switch on the power



## Care and note during maintenance

1 When servicing the luminaire, disconnect the power supply to avoid electric shock.

2: In order to use this product efficiently and safely, please check and clean the luminaire regularly.

3: When replacing the light source during the cleaning process, we recommend that you use high quality, durable branded products.

4. when cleaning lamps and crystal balls, do not rotate the lamp body to unsafe accidents caused by loosening the outer screw teeth of the lamp body.

4: When wiping the beads, it is recommended to use a soft cloth with water diluted with detergent wipe gently over the surface of the crystal beads. When wiping, do not pinch the beads and pull them downwards so that they do not break off. Otherwise, the lamp body will tilt, which can easily cause breakage.

5: Wipe the lamp body holder with a soft cloth, do not dip it in water and alcohol, petrol, etc. to wipe it off. (If you find that the beads are rusty or the crystal beads are missing, you should replace them in time).