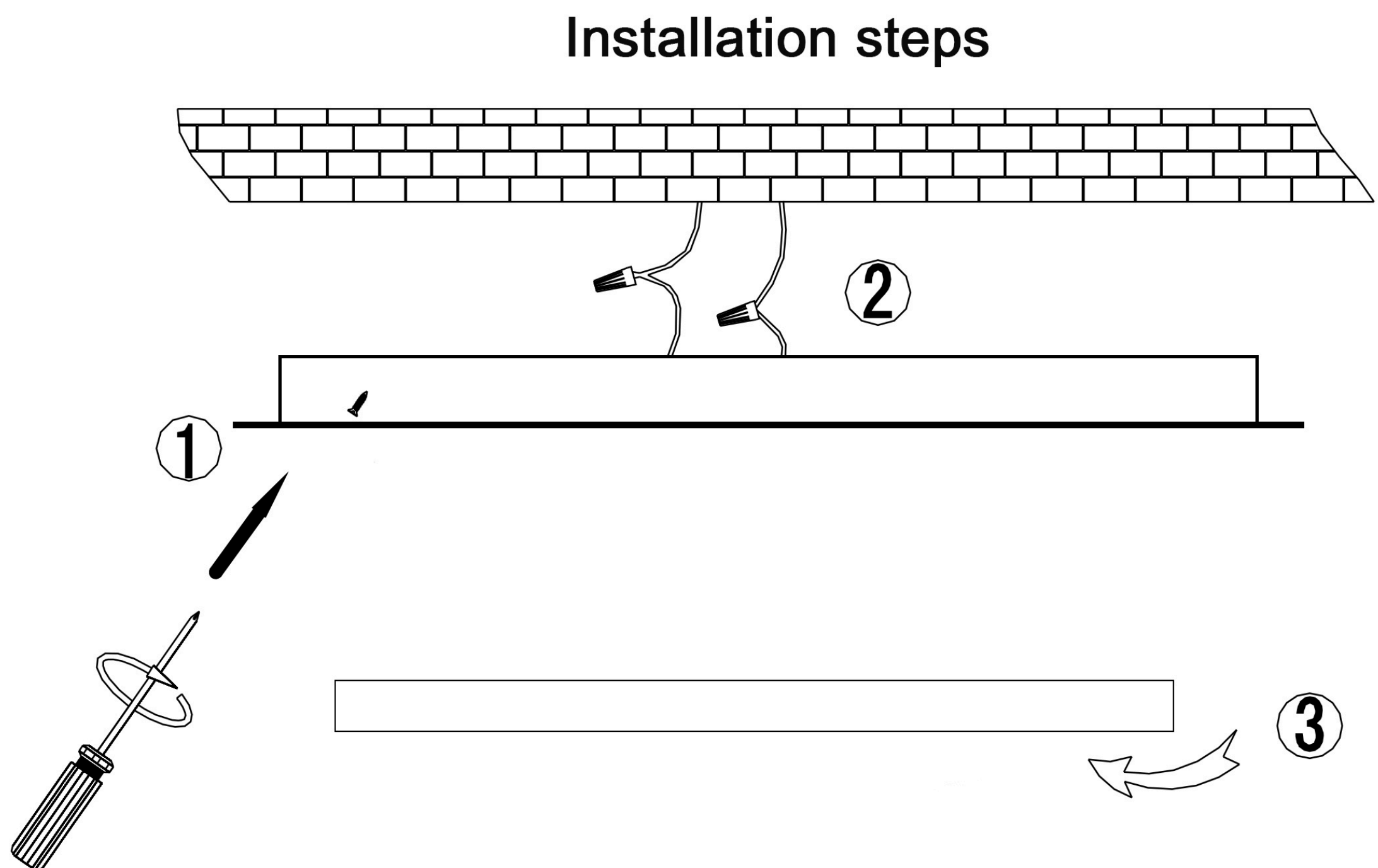


Installation steps and precautions

Installation steps

- 1:First on the ceiling,determine the installation location.
- 2:Use the electric drill to make the hole and install the expansion rubber sleeve.
- 3:Align the holes,install the ceiling light, and tighten the screws.
- 4:Connect the power cord. (Power off installation, Wrap the joint with insulating tape)
- 5:Install the lamp cover and test the ceiling light.



Note:

- 1:Please install by a professional electrician.
- 2:Turn off the power when installing and cleaning.
- 3:Not suitable for installation in wet places.